

date  
projectname  
attn  
from  
fax  
email  
phone

ZXGRDSZ  
DSeF  
fesFE  
EARf3w  
eRWQE  
WQ@AOL.COM  
erfrwf



# U176

## Vanity Mounted Towel Dispenser

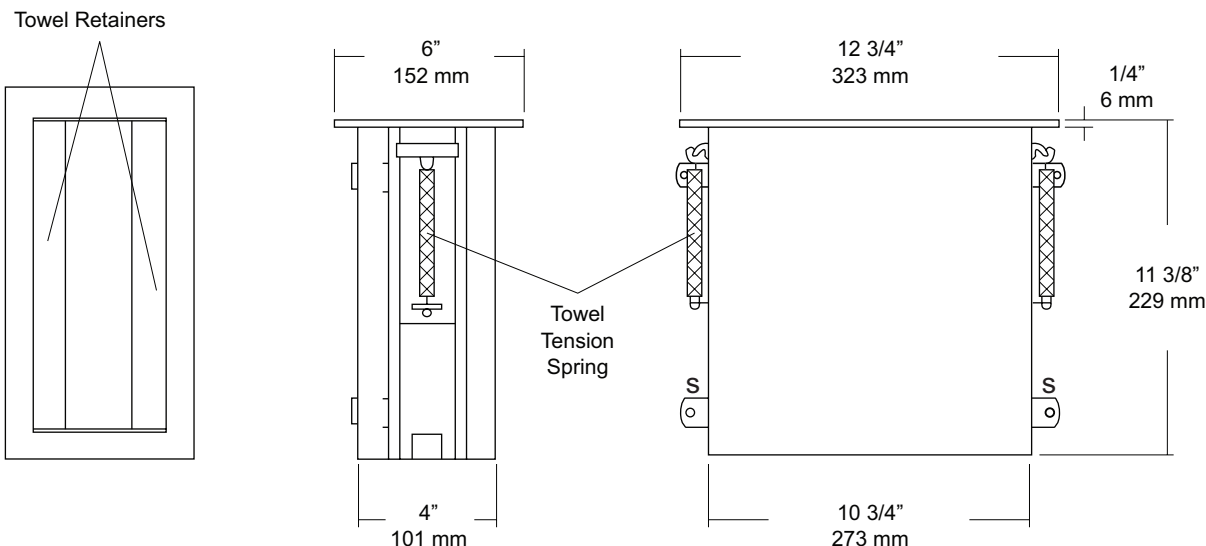
Revision 03/11

JOB #:

ITEM #:

QUANTITY:

MOUNTING	HANDING	TYPE	SIZE	OTHER



### SPECIFICATIONS

**Cabinet:** Fabricated of #22 gauge stainless steel with a #4 satin finish on all exposed surfaces.

**Flange:** Fabricated of #22 gauge stainless steel with a #4 satin finish. Returns are 1/4" to countertop for maximum strength.

**Dispenser:** Towel retainers are fabricated of #22 gauge stainless steel. Dispenser is equipped with a spring loaded towel tray

**Capacity:** 300 c-fold or 400 multifold

**Overall Size:** 6"W x 12 3/4"L x 11 3/8"D

**152mm x 324mm x 289mm**

**Vanity Opening:** 4 1/2"W x 12 1/4"L

**114mm x 311mm**

### INSTALLATION

Provide a countertop opening 4 1/2"W x 12 1/4"L. Bend mounting tabs in, towards the cabinet and insert into countertop opening. Make sure unit is flush with countertop. Bend back tabs and mount unit at points indicated by "S" on drawing. Coordinate installation with architect or contractor to avoid interference with pipes.

### NOTES

Formerly Model #: U976



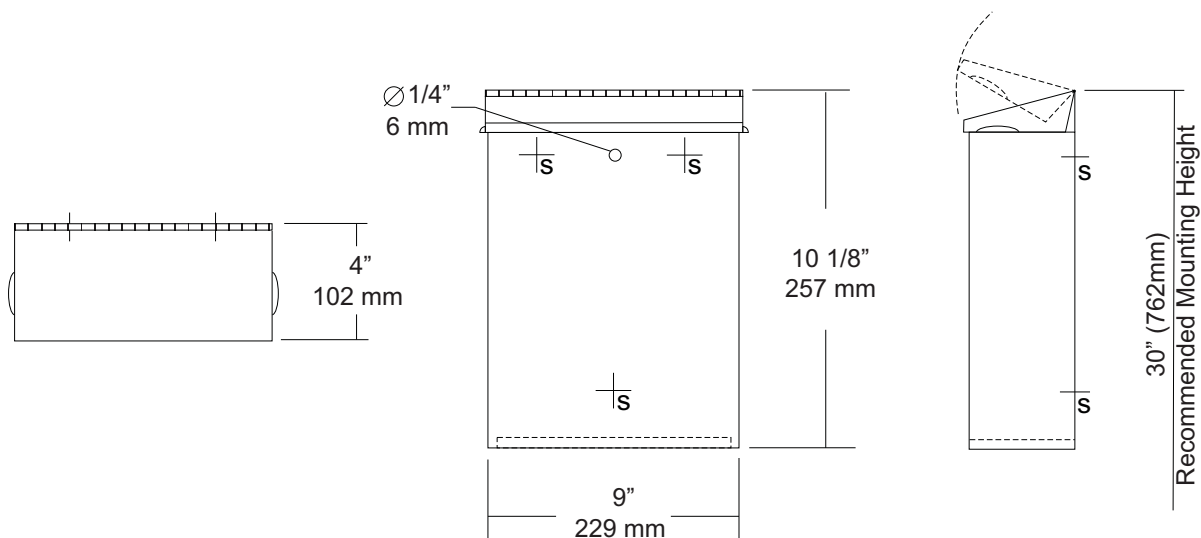
# U591 Surface Mounted Sanitary Napkin Disposal Revision 1/14

JOB #:

ITEM #:

QUANTITY:

MOUNTING	HANDING	TYPE	SIZE	OTHER



## SPECIFICATIONS

**Cabinet Body:** Fabricated of #22 ga stainless steel with #4 satin finish. Seamless construction with radius and hemmed edges.

**Cabinet Back:** Stainless steel welded to cabinet body with key hole mounting points.

**Cover:** Fabricated of #22 ga stainless steel #4 satin finish with embossed handles on each side and sloped top.

**Hinge:** Heavy duty, full length, stainless steel piano type hinge.

**Overall Size:** 9"W x 10 1/8"H x 4"D

**229mm x 257mm x 102mm**

**Capacity:** 1.6 gallons (.2 cu ft)

**NDL-13-50:** Waxed disposable liners. (50 per Case)

## INSTALLATION

Provide an area at desired or specified location. Place unit on surface and transfer mounting points. Drill pilot holes and secure with proper fasteners. Install waxed liner.

## NOTES



# U815 Toilet Tissue Dispenser & Shelf Combination Unit

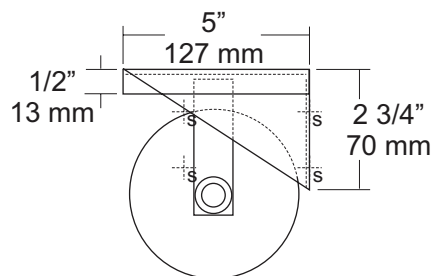
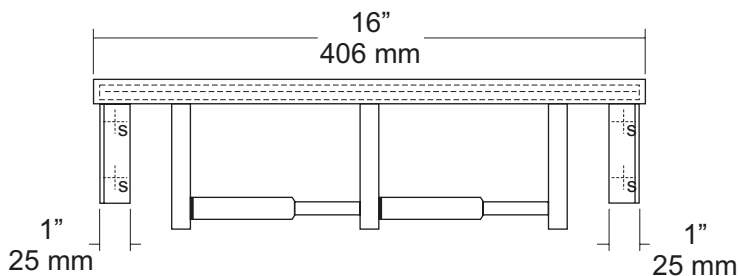
Revision 03/11

JOB #:

ITEM #:

QUANTITY:

MOUNTING	HANDING	TYPE	SIZE	OTHER



## SPECIFICATIONS

**Shelf:** Fabricated of #18 gauge stainless steel with a #4 satin finish. Sides of shelf are bent down 1/2" with front edge bent down 1/2" along with 1/2" returns back for added rigidity and safety.

**Brackets:** Fabricated of #18 gauge stainless steel formed for maximum strength.

**Toilet Tissue Dispenser:** Fabricated of stainless steel with a #4 satin finish. (UX142-SF)

**Rollers:** High impact, chrome plated ABS that is spring loaded.

**U007 Theft Resistant Adapter:** Prevents spindle from being removed until roll has been depleted.

**Overall Size:** 16"W x 4"H x 5"D

**406mm x 102mm x 127mm**

**Capacity:** One standard rolls with a 5 1/4" (133mm) OD.

## INSTALLATION

Place unit against mounting surface. Making sure unit is level, transfer mounting point locations and drill pilot holes. Secure with proper fasteners per each application. Install toilet tissue rolls.

Toilet Paper Dispensers: All dispensers that are to meet ADA code cannot have any type of controlled delivery. (4.16)

## NOTES

Formerly Model #: U815-42