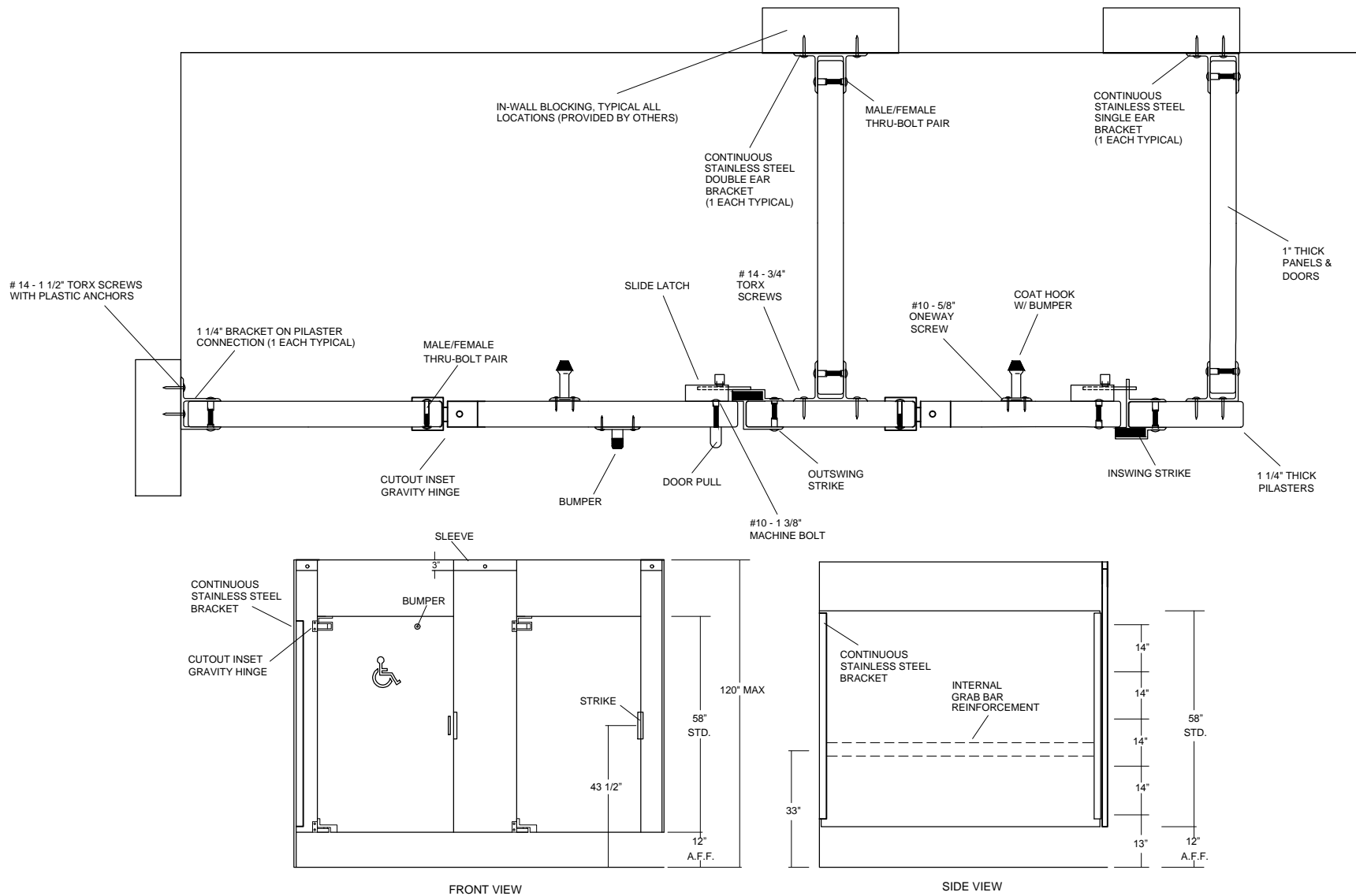
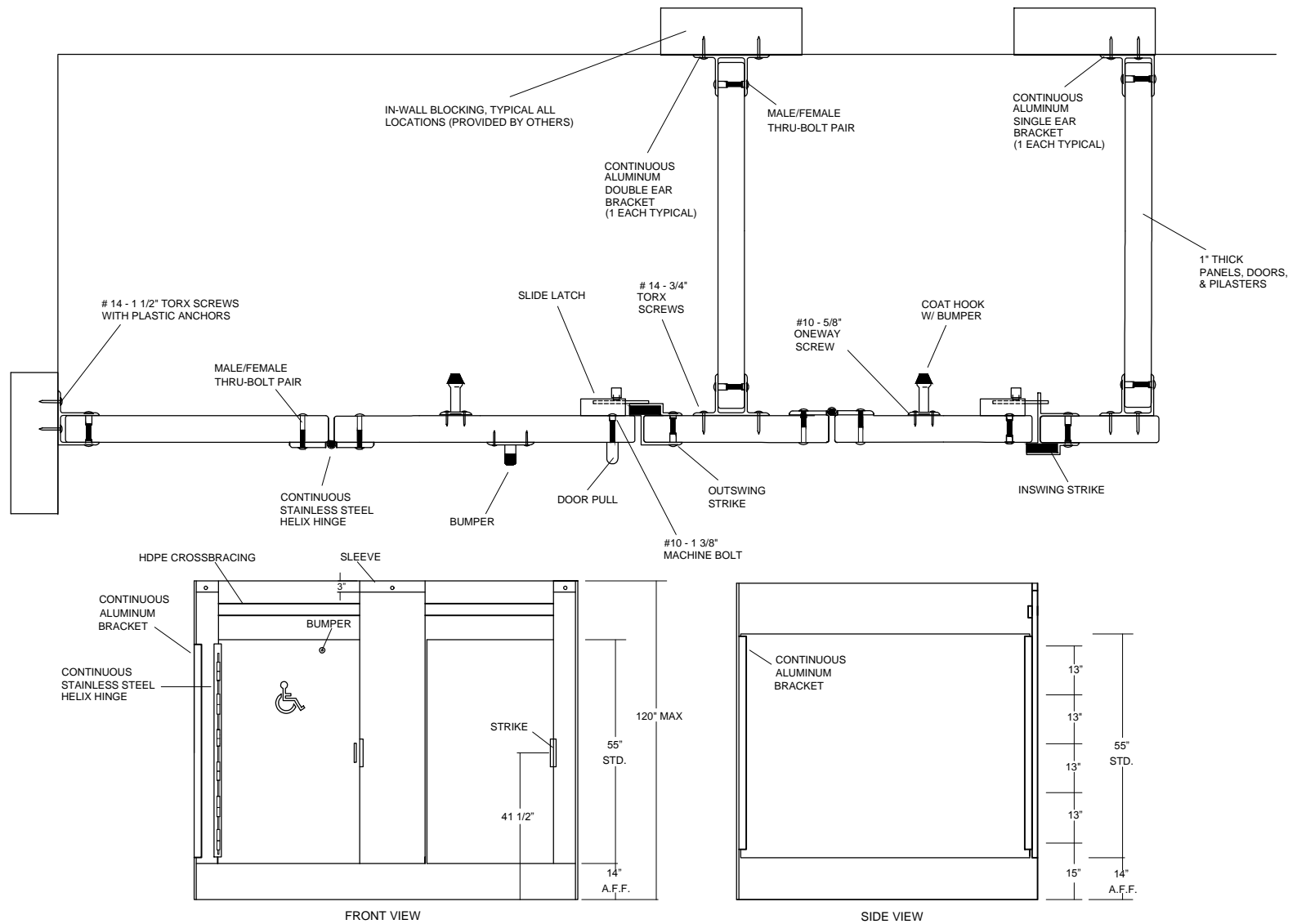
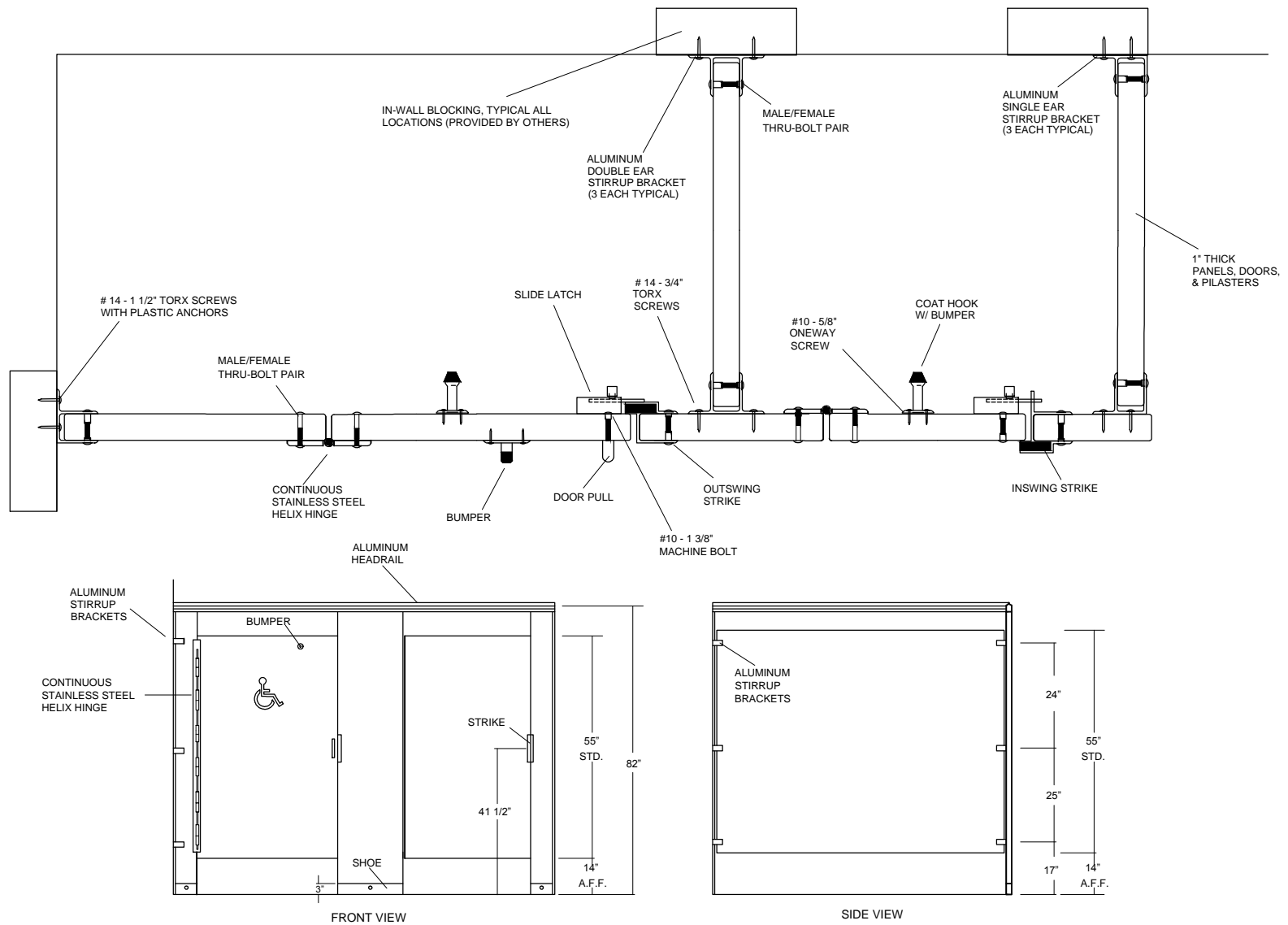


date
projectname
attn
from
fax
email
phone

6/8/16
BRV bldg
CDB
CDB









U115 Powder Soap Dispenser

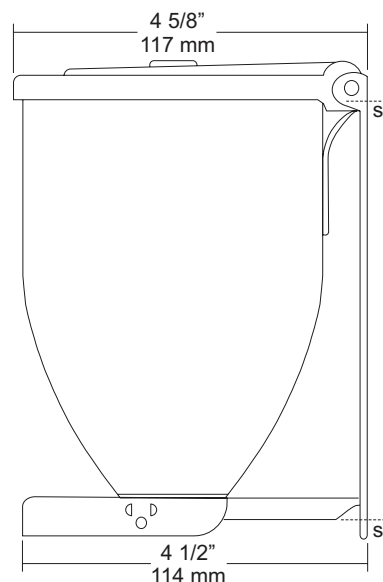
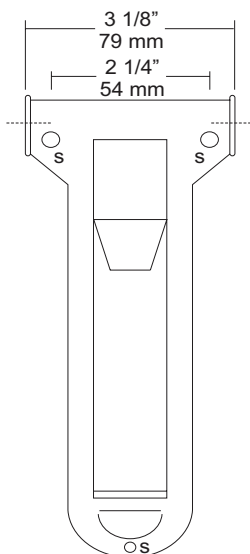
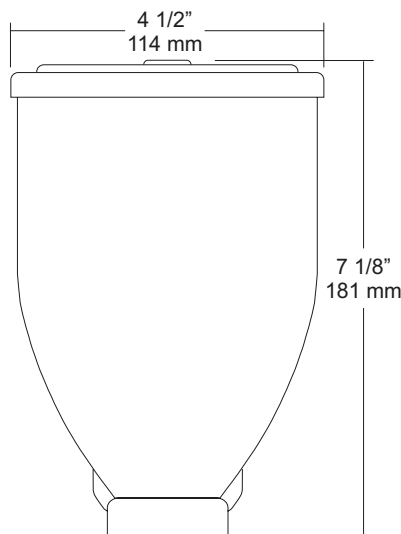
Revision 03/11

JOB #:

ITEM #:

QUANTITY:

| MOUNTING | HANDING | TYPE | SIZE | OTHER |
|----------|---------|------|------|-------|
| | | | | |



SPECIFICATIONS

Tank: Fabricated corrosion resistant stainless steel with a brushed satin finish. Large filler cap (4 3/8" dia. 111mm) is tamper resistant that opens with special key. Large opening allows easy servicing.

Wall Plate: Fabricated of heavy gauge chrome plated steel.

Dispensing Arm: Push knob, spring and discharging mechanism are fabricated of stainless steel. Pre-measured amounts of powder soap are dispensed to prevent waste and is moisture resistant to avoid caking of powder.

Overall Size: 4 1/2"W x 7 1/8"H x 4 5/8"D

114mm x 181mm x 119mm

Capacity: 32 oz powder soap

INSTALLATION

Provide an area on wall surface at desired or specified location. Clip tank to bottom of mounting plate. Place mounting plate on wall surface and transfer mounting points. Drill pilot holes and secure with proper fasteners per application. Secure tank to top of mounting plate by pressing top of dispenser against wall plate and installing hinge pin. Open filler cap and fill with powder soap. Test push bar for proper operation. Secure lid after operation checks good.

*It is not recommended to mount any soap dispenser on mirrors

NOTES



U930 Retractable Corner Shower Seat

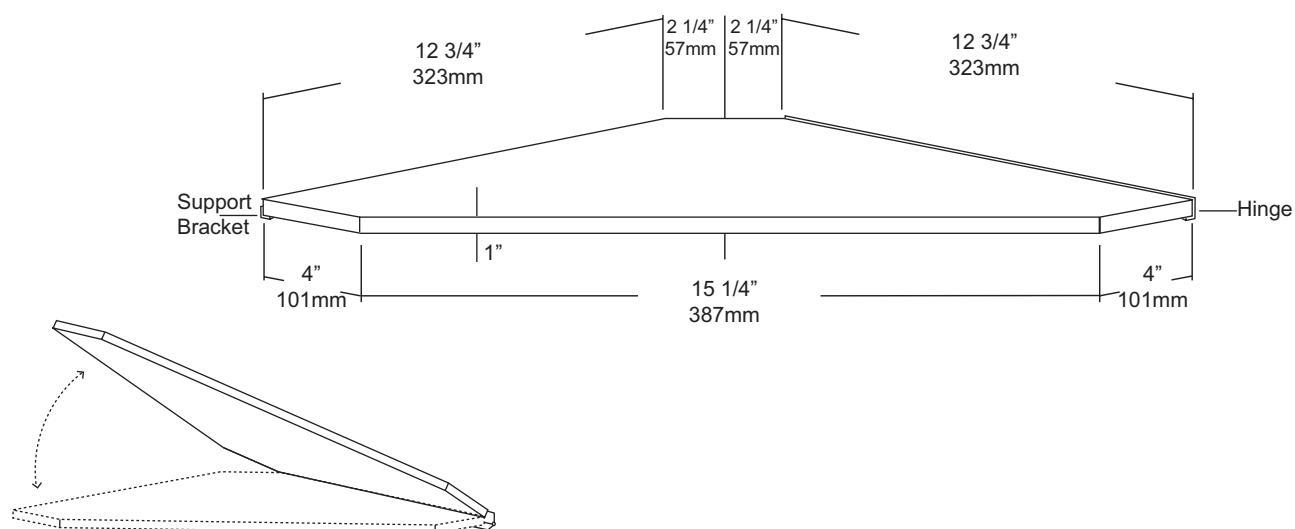
Revision 03/11

JOB #:

ITEM #:

QUANTITY:

| MOUNTING | HANDING | TYPE | SIZE | OTHER |
|----------|---------|------|------|-------|
| | | | | |



SPECIFICATIONS

Seat: Fabricated of #16 gauge stainless steel double pan construction with a #4 satin finish with heliarc welded seams polished smooth. (Load capacity: 250 lbs) All corners are beveled.

Support: 1/8" stainless steel formed bracket (exposed mounting) is secured to wall surface and acts as a support opposite of hinged side.

Hinge: Heavy duty full length stainless steel hinge is welded to 1/8" formed bracket (exposed mounting) allowing raising and lowering of seat.

Overall Size: 15" x 15 1/4" x 15" x 1" thick

381mm x 387mm x 381mm x 25mm

INSTALLATION

Coordinate with contractor and architectural plans for pipes, vents etc in wall. Secure seat to proper backing and framing with proper fasteners per application. (Fasteners not supplied) If this seat is being secured for a security type application, proper security style fasteners should be used. (Not supplied) Proper mounting height above finished floor is 17" - 19". Check all state and local building codes.

Select mounting height above finished floor and secure support bracket with proper fasteners. Position seat at selected height in the lower position resting on support bracket. When seat is level transfer mounting points to hinged side. Secure hinged side and test the travel of the seat.

NOTES



U984-SM Baby Changing Station

Revision 07/15

JOB #:

ITEM #:

QUANTITY:

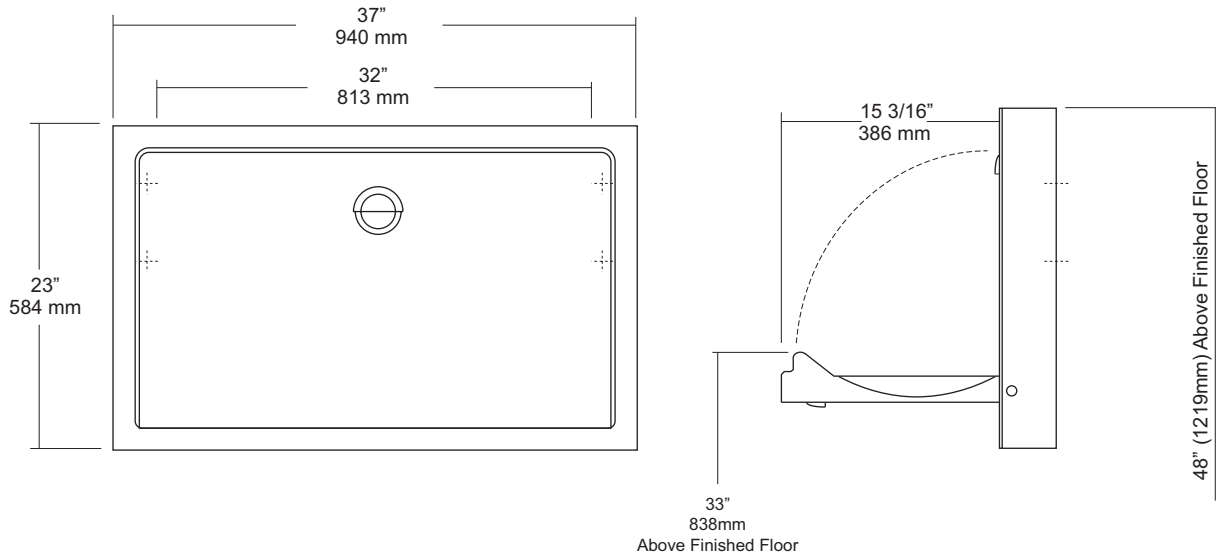
MOUNTING

HANDING

TYPE

SIZE

OTHER



SPECIFICATIONS

Body: Fabricated of high impact ABS polyethylene with Microban Anti-Microbial additive, and radius leading edges that prevent injury. Material is odor resistant and easy to clean and available in grey. Base is concave formed to allow safe and easy changing. Molded graphics and brail comply with ADA code.

External Wrap: Fabricated of #18 ga stainless steel with a #4 satin finish. Wrap is reinforced with a full length steel on steel mechanism with #11 ga mounting plate.

Liner Dispenser: An integral part of body that is standard with each unit.

Gas Shocks: Concealed gas spring actuators ensure a safe and smooth open and close motion.

Safety Straps: Snap lock fasteners to hold child securely in place.

Overall Size: 37"W x 23"H x 4"D (closed) 19"D (open)

940mm x 584mm x 102mm (closed) 483mm (open)

Colors Available: Grey

INSTALLATION

Coordinate installation with architect or contractor to avoid interference with surrounding objects in and out of wall. Making sure unit is level, transfer mounting point locations. Drill pilot holes and secure with proper fasteners for each application. (Recommend a qualified carpenter to install unit) Unit can be lowered with one hand and into position with less than 5 lbs of force, wall openingut turning or twisting of wrist. Verify with local codes and type approach (forward or side) for proper mounting height above finished floor. Mounting points are located on side of unit.

Unit should be cleaned once or more daily with a clean nylon brush and spray disinfectant.

When properly installed, baby changing stations comply with ASTM static load performance requirements.

NOTES

Formerly Model #: U945H-SS