





## LEED Credit Information – Washroom Accessories

As intimidating as LEED certification may seem, we know that a little extra help goes a long way. That's why the AJW collection includes various products that can help you come closer to earning your LEED certification. While LEED doesn't certify products, using recycled, sustainable, and energy-efficient products earns you points in the LEED program.

The LEED credit information for AJW Washroom Accessories is as follows:

- **Sourced Material:** Stainless steel sourced within a 500 mile radius. Our stainless steel products will help with your eligibility toward MR Credits 5.1 and 5.2 if your project is within 500 miles of our manufacturing facility in New Windsor, NY and the original source, Pittsburgh, PA.
- **Raw material:** All AJW stainless steel products are made up of between 55% and 65% recycled material. 35% of our stainless steel is recycled pre-consumer and 25% is recycled post-consumer. Our stainless steel will help with your eligibility toward MR Credits 4.1 and 4.2.
- **Plastics:** All plastic AJW baby changing stations are made up of 50% recycled polyethylene, and AJW HD plastic retractable shower seat decks are made of 35% pre-consumer recycled polymers. Our plastic materials will help with your eligibility toward MR Credits 4.1 and 4.2.
- **Packaging:** Our corrugated cardboard packaging is made up of 87% post-consumer recycled material.
- **Glass:** All glass used in AJW mirrors are made up of 20% pre-consumer recycled materials.



# U7204-1626

Uni-Door Medicine Cabinet

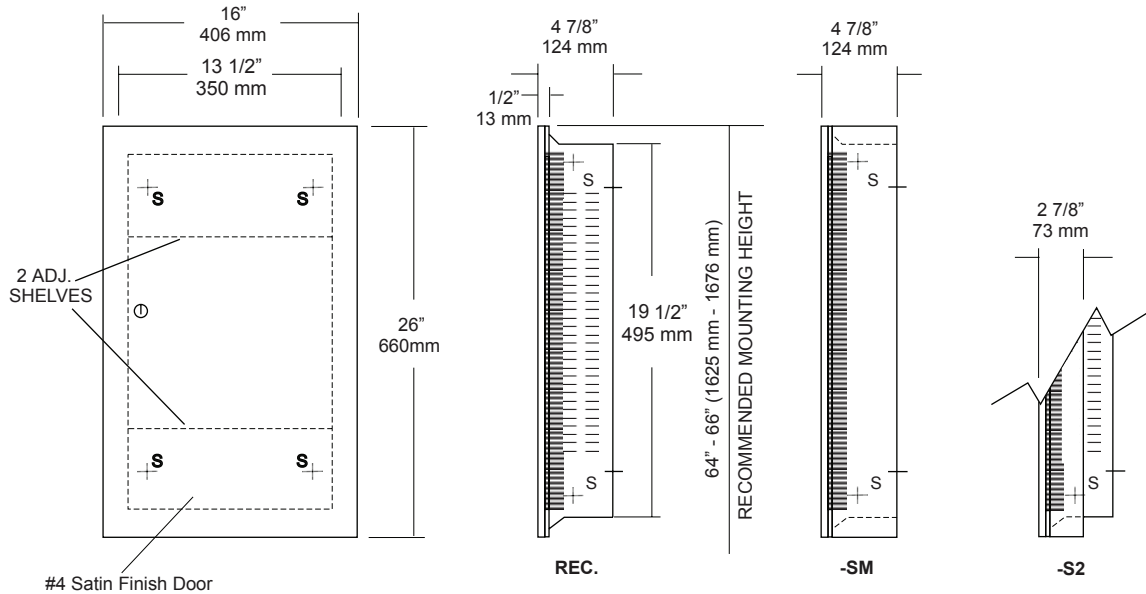
Revision 12/14

JOB #:

ITEM #:

QUANTITY:

| MOUNTING | HANDING | TYPE | SIZE | OTHER |
|----------|---------|------|------|-------|
|----------|---------|------|------|-------|



## SPECIFICATIONS

**Cabinet Body:** Fabricated of #22 ga stainless steel formed for rigidity. Embossed louvers in body allow shelving to be adjustable. Flange surrounds cabinet body that has 1/4" returns to wall. (No miters or welds)

**Cabinet Back:** Stainless steel secured to cabinet body with multiple welds to cabinet body.

**Uni-Door:** Fabricated of #18 gauge stainless steel with satin finish.

**Frame:** #22 ga stainless steel #4 satin finish.

**Adjustable Shelving:** Two (2) #22 ga stainless steel with #4 satin

**Lock:** Pin tumbler type.

**Hinges:** Full length, heavy duty stainless steel piano type

**Collars:** #22 ga stainless steel with #4 satin, one piece construction, finished to match cabinet body.

**Overall Size:** 16"W x 26"H x 4 7/8"D  
**406mm x 660mm x 124mm**

**Wall Opening:** 14"W x 20"H x 4"D  
**355mm x 508mm x 102mm**

**U7204-1626-S2:** semi-recessed Medicine Cabinet

**Wall Opening:** 2" wall opening required.

**U7204-1626-SM:** Full surface mounted cabinet.

## INSTALLATION

Secure cabinet with proper fasteners per application. After cabinet checks good, install adjustable shelving. Unit can be mounted to have a right hand or left hand swing door. Collars can be added in the field to accommodate semi-recessing or full surface mounting.

To comply with ADA code, one usable shelf must be mounted no higher than 44" above finished floor. (4.2.4)

## NOTES

Formerly Model #: U721-1626



**US21**  
Security Soap Dish

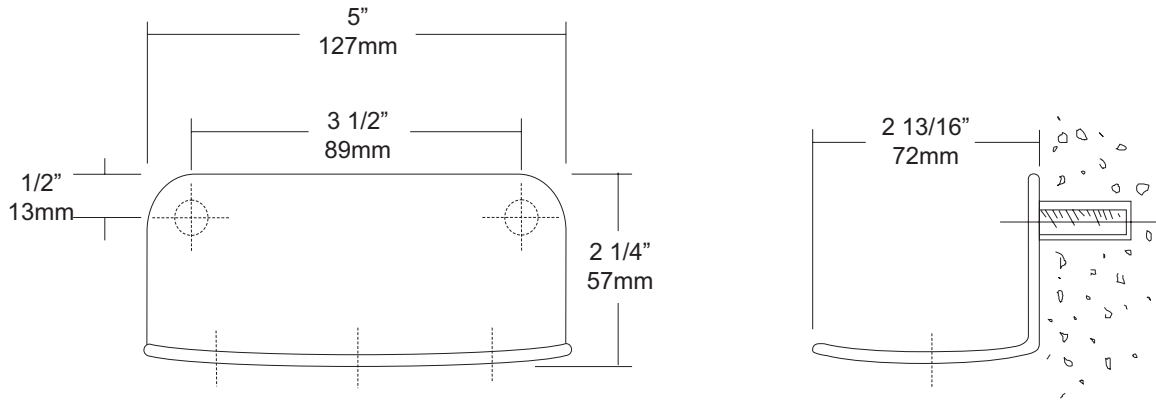
Revision 03/11

JOB #:

ITEM #:

QUANTITY:

| MOUNTING | HANDING | TYPE | SIZE | OTHER |
|----------|---------|------|------|-------|
|          |         |      |      |       |



**SPECIFICATIONS**

**Shell:** Fabricated of #7 gauge stainless steel with a #4 satin finish, formed from a single piece of stainless steel. Unit is equipped with three (3) drain holes. Welded anchor nuts will receive 1/4"-20 studs

**Mounting:** Concealed type mounting requires in wall backing and anchoring devices. This type unit is for chase walls.

**Overall Size:** 5"W x 2 1/4"H x 2 13/16"D  
127mm x 57mm x 68mm

**INSTALLATION**

Transfer mounting point locations to wall surface and drill holes to except welded studs and rod. Determine the wall thickness to install threaded securing rod. Cut rod to desired length and secure to back side of wall with back plate. Nuts and washers are not supplied.

**NOTES**