

date  
projectname  
attn  
from  
fax  
email  
phone

5/9/16  
Testing  
Tom  
Tom Butler  
None  
tom.butler@ajw.com  
845-522-5398

# VISUAL DISPLAY PRODUCTS



**AJW**  
.....  
Architectural Products™



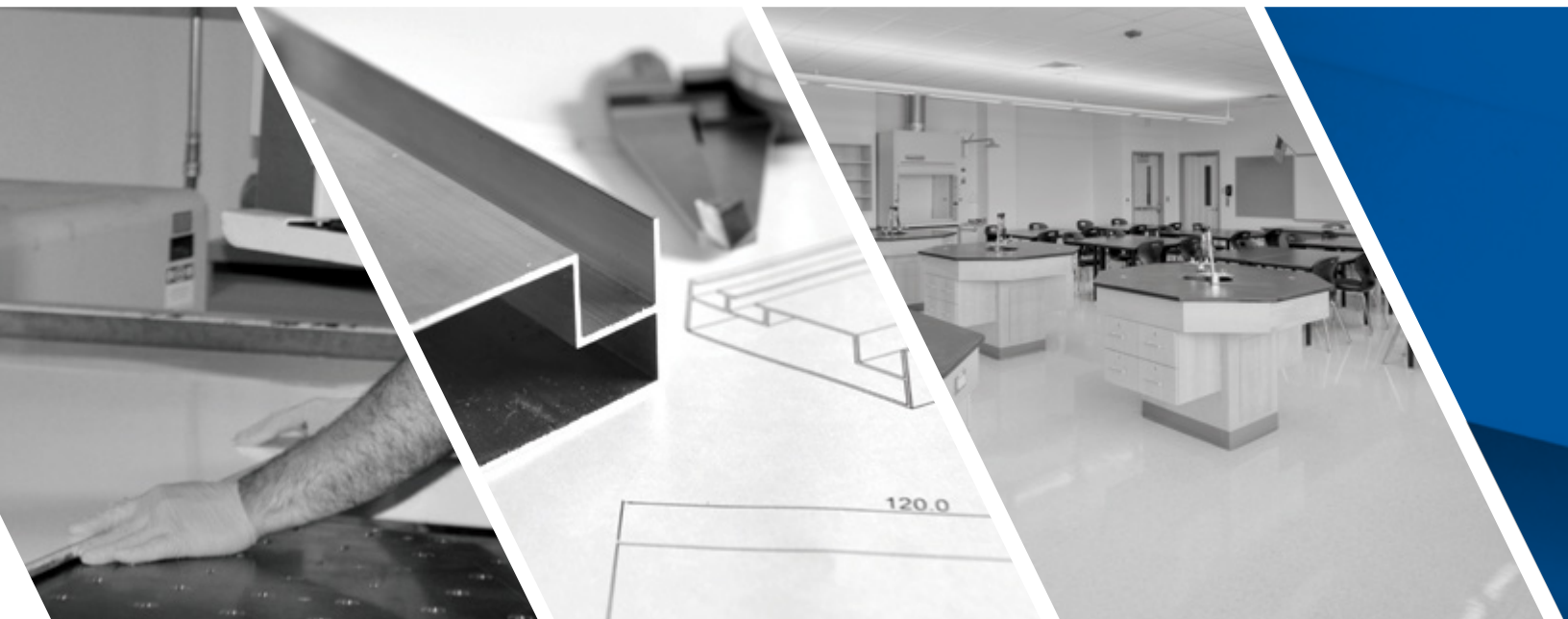
## ▀ Culture • Focus • Results™

At AJW, our culture is our company. With that in mind, we focus on the mechanics that support a high-performance team. Transparency, communication, discipline, and focus are cornerstones of our operational behavior.



# TABLE OF CONTENTS

|                                     |           |                                 |           |
|-------------------------------------|-----------|---------------------------------|-----------|
| <b>About AJW</b> .....              | <b>1</b>  | <b>Display Rails</b> .....      | <b>11</b> |
| <b>Markerboards</b> .....           | <b>3</b>  | <b>Combination Boards</b> ..... | <b>13</b> |
| <b>Trim / Tray Options</b> .....    | <b>5</b>  | <b>Display Cases</b> .....      | <b>14</b> |
| <b>Tackboards</b> .....             | <b>6</b>  | <b>Horizontal Sliders</b> ..... | <b>15</b> |
| <b>Tackboard Color Charts</b> ..... | <b>7</b>  | <b>Bulletin Boards</b> .....    | <b>17</b> |
| <b>Nomenclature</b> .....           | <b>9</b>  | <b>Conference Units</b> .....   | <b>18</b> |
| <b>Tackwall</b> .....               | <b>10</b> | <b>Glass Markerboards</b> ..... | <b>19</b> |



## ▶ American Manufacturing

With manufacturing facilities in New York and Texas, AJW can respond with agility and precision to even the most complex initiatives. From high-style custom projects to a demanding scope of work, AJW has the team, infrastructure and experience to deliver results you can be confident in.

## ▶ Intelligent Sourcing

At AJW, we build partnerships that last. Many of our legacy partners have complemented our manufacturing capabilities for nearly 50 years. Consequently, we continue to leverage the depth, breadth, and strength of our supply chain to drive results and expand our distribution network globally.

## ▶ Better Results

High performance results are our priority. American manufacturing and intelligent sourcing allow us to leverage our in-house capabilities and our proven network of partners so that we are able to respond when it counts.





# Focused on Service<sup>SM</sup>

## ▶ We Are AJW

For nearly 50 years, we have Focused on Service<sup>SM</sup>. As a result, our infrastructure is customer driven. We listen so that we understand your goals and objectives. We tailor our efforts and direct our action to be in concert with your needs. We measure our success by the health of our partnerships. American manufacturing, precise supply chain management and a focused culture are the fuel for better results. We are AJW.



**AJW**  
Architectural Products<sup>TM</sup>

509 Temple Hill Road

# MARKERBOARDS

▶ AJW porcelain on steel writing surfaces provide the ideal communication platform to share your ideas, debate your plan, and review your results. AJW Markerboards are fabricated using a three-ply construction process, including a porcelain enamel writing surface with a lifetime warranty. Your AJW Markerboard can be designed with a number of trim, tray and maprail options.

## ▶ SPECIFICATIONS

Balanced, high pressure laminated, porcelain enamel markerboards of three-ply construction consisting of face sheet, core material, and backing.

- Magnetic for use with dry erase markers
- 1/2" Core with aluminum backing sheet
- Excellent writing and erasing performance
- Lifetime warranty on porcelain enamel writing surface

AJW's porcelain enameled surface conforms to the standards set forth by the Porcelain Enamel Institute (PEI), and is backed by a lifetime warranty. The face sheet is comprised of enameling grade steel specially processed for temperatures used in coating porcelain on steel. Exposed face and edges are coated with a 3-coat process consisting of primer, ground coat, and color cover coat. Concealed face is coated with a 2-coat process consisting of primer and ground coat. Cover and ground coats are fused to steel at firing temperatures of approximately 1475°.

## ▶ STANDARD SIZES

|          |          |
|----------|----------|
| 2' x 3'  | 4' x 16' |
| 4' x 3'  | 5' x 4'  |
| 4' x 4'  | 5' x 5'  |
| 4' x 5'  | 5' x 6'  |
| 4' x 6'  | 5' x 8'  |
| 4' x 8'  | 5' x 10' |
| 4' x 10' | 5' x 12' |
| 4' x 12' | 5' x 14' |
| 4' x 14' | 5' x 16' |

*Custom sizes available*

# MARKERBOARDS



## ▶ PRODUCT OPTIONS

### Maprail Accessories



Flag Holder



Roller Bracket



Map Hook

### Screen Print



Music Lines



Penmanship Lines



Graph Coordinates



Polar Coordinates

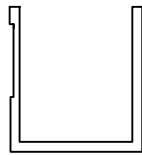
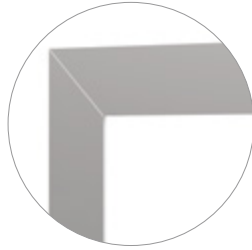
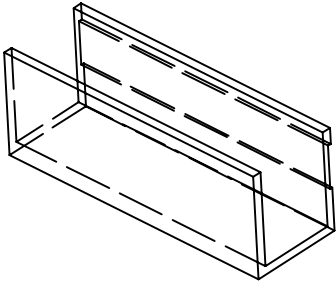
*AJW graphic boards are fabricated with imprinted lines that are UV-Resistant, scratch resistant, and permanently fused to the porcelain enamel writing surface.*



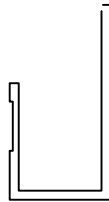
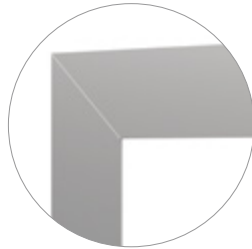
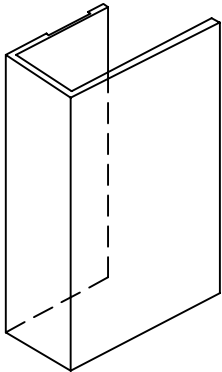
# TRIM & TRAY DETAIL

## Trim Options

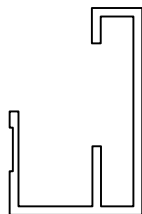
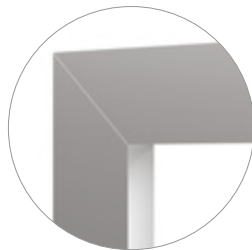
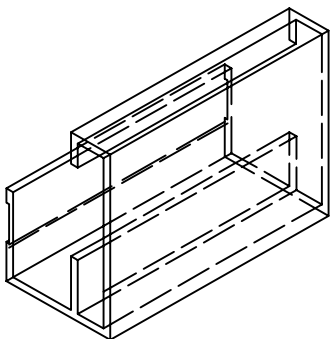
Flat Trim - 3/4" Profile



Wide Flat Trim - 1 1/4" Profile

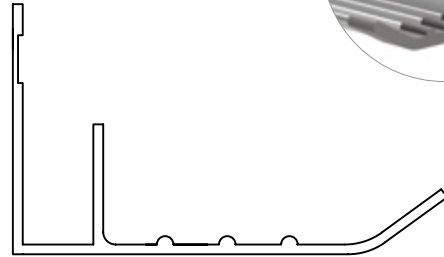


Box Trim - 1 1/2" Profile

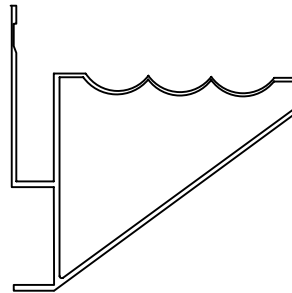


## Tray Options

Flat Tray  
(Plastic Endcaps)



Box Tray  
(Aluminum Endcaps)

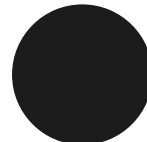


## Powder Coating Color Options

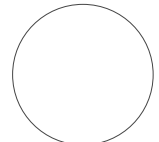
Aluminum components come standard with a clear anodized finish.



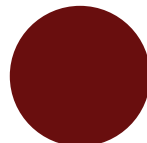
Ivory  
(0012)



Black  
(0029)



Winter White  
(0028)



Burgundy  
(0025)

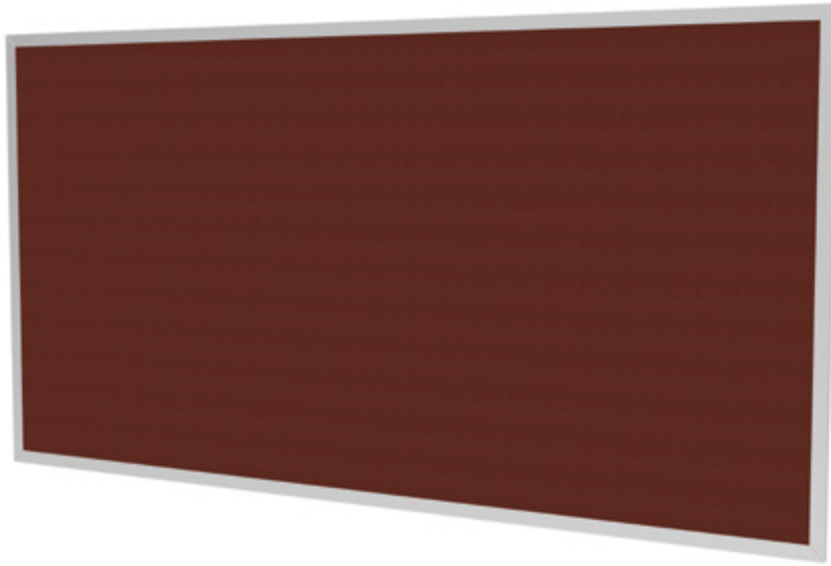


Marine Blue  
(0020)



Hunter Green  
(0017)

# TACKBOARDS



▶ AJW Tackboards are the ideal tool to enhance your communication strategy. Improve the use of your tackboard and complement the design by choosing from one of many trim and maprail options. You can further personalize your tackboard by selecting from a number of tackable surface options that include: natural cork, colored cork, vinyl fabric, and designer fabric.

## ▶ OPTIONS

### Maprail

1" or 2" Maprail option, with numerous tackable insert options available including: natural cork, colored cork, vinyl faced, and fabric faced. Maprail is designed to be used with map hooks and flag holders.

### Construction

- Framed Option
- Wrapped Option (Vinyl & Fabric Only)

### Tackable Surface Materials

- Natural Cork
- Colored Cork
- Designer Fabric
- Type 1 Vinyl Fabric
- Type 2 Vinyl Fabric

## ▶ STANDARD SIZES

2' x 3'

4' x 3'

4' x 4'

4' x 5'

4' x 6'

4' x 8'

4' x 10'

4' x 12'

4' x 14'

4' x 16'

*Custom sizes available upon request*

# TACKBOARDS

## TACKABLE SURFACE OPTIONS



### Natural Cork

#### Natural Cork Tackboards

High-pressure laminated pure grain natural cork tackboards of two-ply construction consisting of natural cork face sheet and backing. AJW natural cork is self-healing and all natural.

#### Face Sheet and Core Options:

- 1/8" Natural Cork on 3/8" Fiberboard
- 1/4" Natural Cork on 1/4" Hardboard



### Colored Cork (Forbo)

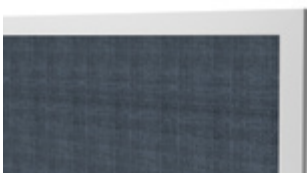
#### Colored Cork Tackboards

Linoleum, resilient tackable surface material, 1/4" thick with integral color throughout, laminated to burlap backing. AJW colored cork is washable, self healing, and resistant to bacteria. This cork is also known as Forbo Cork, or plastic impregnated cork. AJW offers a full range of standard colors.

#### Face Sheet and Core Options:

- 1/4" Colored Cork on 1/4" Hardboard

## Edge Options

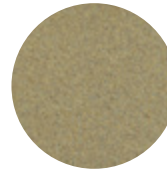


Framed



Wrapped Edge

## Colored Cork



Desert Sand  
(2067)



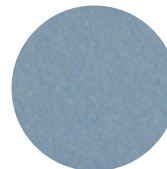
Grey  
(2162)



Tan  
(2166)



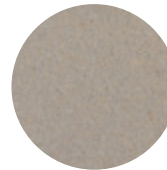
Stone  
(2182)



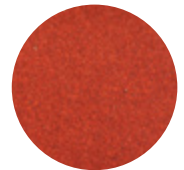
Blue  
(2185)



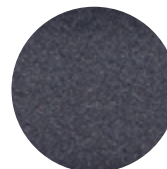
Buff  
(2186)



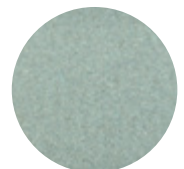
Fawn  
(2187)



Red  
(2201)



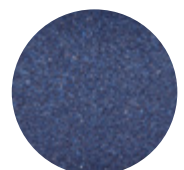
Black  
(2202)



Green  
(2203)



Graphite  
(2204)

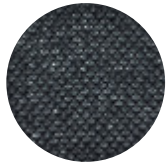


Midnight Blue  
(2205)

# TACKBOARDS

## TACKABLE SURFACE OPTIONS

### Designer Fabric



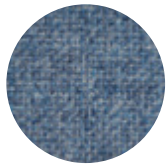
Black  
(5001)



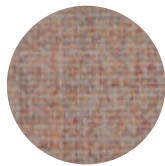
Wheat  
(5002)



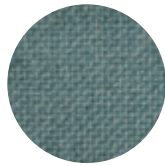
Pearl  
(5003)



Wedgewood  
(5004)



Cherry Neutral  
(5005)



Blue Spruce  
(5006)

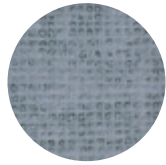
### Designer Fabric Tackboards

100% recycled polyester decorative designer fabric faced cork tackboards of three-ply construction consisting of designer fabric face sheet, core material, and backing. AJW offers a full range of standard colors. Custom colors are available upon request.

### Face Sheet and Core Options:

- Designer Fabric, 1/8" Natural Cork, and 3/8" Fiberboard
- Designer Fabric, 1/4" Natural Cork, and 1/4" Hardboard
- Designer Fabric on 3/8" Fiberboard (Wrapped Edge Only)
- Designer Fabric on 1/2" Fiberboard

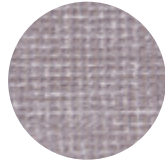
### Vinyl Type I



Denim  
(3001)



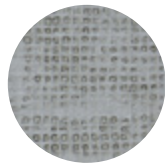
Bleached  
(3002)



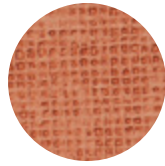
Windrift  
(3003)



Taupe  
(3004)



Platinum  
(3005)

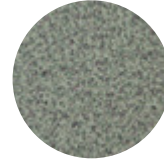


Persimmon  
(3006)

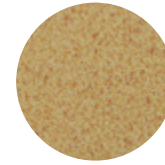
### Vinyl Type II



Cotton White  
(4001)



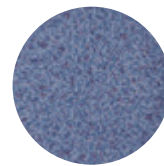
Moss  
(4002)



Buttercup  
(4003)



Stone  
(4004)



French Blue  
(4005)



Amethyst  
(4006)

### Vinyl Covered Tackboards

High pressure laminated vinyl fabric faced cork tackboards of three-ply construction consisting of vinyl fabric face sheet, core material, and backing. AJW vinyl fabric complies with G.S.A. CCC-W-408 and the CFFA 101C quality standard for vinyl coated fabric wall covering. Both Type I and Type II vinyl fabric is available.

AJW offers a full range of standard colors. Custom colors are available upon request.

### Face Sheet and Core Options:

- Vinyl Fabric, 1/8" Natural Cork, and 3/8" Fiberboard
- Vinyl Fabric, 1/4" Natural Cork, and 1/4" Hardboard
- Vinyl Fabric on 3/8" Fiberboard (Wrapped Edge Only)
- Vinyl Fabric on 1/2" Fiberboard



# NOMENCLATURE

## MARKERBOARDS

| Series Prefix                   | Trim / Tray Style                     | Map Rail                         | Tackable Insert Suffix     |
|---------------------------------|---------------------------------------|----------------------------------|----------------------------|
| <b>N10</b> – Particleboard Core | <b>1</b> – Flat Trim / Flat Tray      | <b>0</b> – No Map Rail           | <b>N</b> – Natural Cork    |
|                                 | <b>2</b> – Flat Trim / Box Tray       |                                  |                            |
| <b>N11</b> – Hardboard Core     | <b>3</b> – Wide Flat Trim / Flat Tray | <b>1</b> – 1” Map Rail           | <b>C</b> – Colored Cork    |
|                                 | <b>4</b> – Wide Flat Trim / Box Tray  | <b>2</b> – 2” Map Rail           | <b>A</b> – Type I Vinyl    |
|                                 | <b>6</b> – Box Trim / Box Tray        | <b>5</b> – Grip Rail             | <b>B</b> – Type II Vinyl   |
|                                 | <b>B</b> – Box Trim / No Tray         | <b>6</b> – 2” Tackable Grip Rail | <b>Z</b> – Designer Fabric |
|                                 | <b>F</b> – Flat Trim / No Tray        |                                  |                            |
|                                 | <b>W</b> – Wide Flat Trim / No Tray   |                                  |                            |
|                                 |                                       |                                  |                            |

**Basis-of-Design Series: [Series Prefix] + [Trim/Tray Style] [DASH] [Map Rail] + [Tackable Insert]**

**Example 1:** N101-1N Series (Particleboard Core, Flat Trim, Flat Tray, 1” Map Rail, Natural Cork Insert)

**Example 2:** N11B-0 Series (Hardboard Core, Box Trim, No Tray, No Map Rail)

**Notes:**

*A tackable insert suffix is not required if there is no map rail.*

## TACKBOARDS

| Series Prefix                     | Trim Style                                | Map Rail                         | Tackable Insert Suffix     |
|-----------------------------------|---|----------------------------------|----------------------------|
| <b>N21</b> – 1/4” Hardboard Core  | <b>B</b> – Box Trim                       | <b>0</b> – No Map Rail           | <b>N</b> – Natural Cork    |
| <b>N22</b> – 3/8” Fiberboard Core | <b>F</b> – Flat Trim                      | <b>1</b> – 1” Map Rail           | <b>C</b> – Colored Cork    |
| <b>N23</b> – 1/2” Fiberboard Core | <b>W</b> – Wide Flat Trim                 | <b>2</b> – 2” Map Rail           | <b>A</b> – Type I Vinyl    |
|                                   | <b>0X</b> – Untrimmed, with wrapped edges | <b>5</b> – Grip Rail             | <b>B</b> – Type II Vinyl   |
|                                   |   | <b>6</b> – 2” Tackable Grip Rail | <b>Z</b> – Designer Fabric |

**Basis-of-Design Series: [Series Prefix] + [Trim Style] [DASH] [Map Rail] + [Tackable Surface]**

**Example 1:** N21W-2C Series (1/4” Hardboard Core, Wide Flat Trim, 2” Map Rail, Colored Cork)

**Example 2:** N23B-0B Series (1/2” Fiberboard Core, Box Trim, No Map Rail, Type II Vinyl)

**Notes:**

- Colored Cork N/A for N22 and N23 series; Natural Cork N/A for N23 series.
- Map Rail tackable insert typically matches the tackable material of the board itself.
- Use “0X” as a trim style to designate an untrimmed board, with no maprail, with fabric wrapped edges (Designer Fabric, Type I vinyl, or Type II vinyl only) (ex. N230X-0A Series)

# TACKWALL



## ▾ TACKWALL SPECIFICATIONS

AJW Tackwall enables you to transform an entire room into the ideal work, play, or creative environment. Our designer friendly surface material options include - colored cork, natural cork, type 1 or 2 vinyl and designer fabric. H-bars can be applied or panels can butt together, supporting a streamlined final product. Optional “J” trim is available to trim the sides, top, and bottom of the wall.

# DISPLAY RAILS

▶ **AJW Display Rails** provide the ability to display information without sacrificing valuable space on your wall. Choose from our wide selection of tackstrips, grip rails, and tackable grip rails for a product that fits your needs.

## ▶ SPECIFICATIONS

### Tackstrips

Aluminum tackstrips come with two end caps and are available with any type of tackable cork insert desired (natural cork, colored cork, vinyl faced, fabric faced). 1" and 2" tackstrips are designed to be used with map hooks, roller brackets and flag holders.

### Grip Rail

Aluminum display rail with integral paper holder, consisting of plastic rollers that grip paper firmly. Grip rail is installed with snap-on plastic clips. Paper is easily removed by lifting bottom edge in an upward direction.

### Tackable Grip Rail

Aluminum frame that combines the tackstrip and grip rail functions, and is comprised of a tackable cork insert on the front face with an integral paper holder, consisting of plastic rollers that grip paper firmly.

## ▶ STANDARD SIZES

4' L

6' L

8' L

10' L

12' L

14' L

16' L

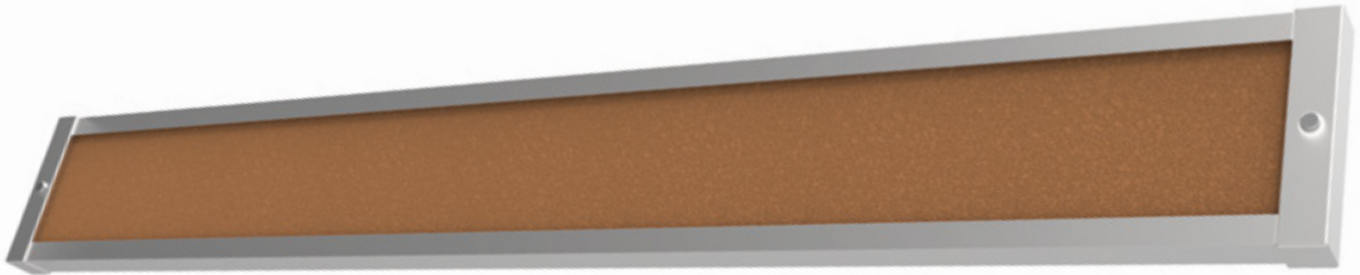
*Custom sizes available upon request*

## ▶ SURFACE OPTIONS

- Natural Cork
- Colored Cork
- Designer Fabric
- Type I Vinyl
- Type II Vinyl

*Color chart available on Page 8.*

# DISPLAY RAILS



1", 2", 3", 4" Profiles available



Grip Rail



Tackable Grip Rail  
2" Profile Only

## Accessories

Accessories included for 1" and 2" tackstrips.



Flag Holder



Roller Bracket

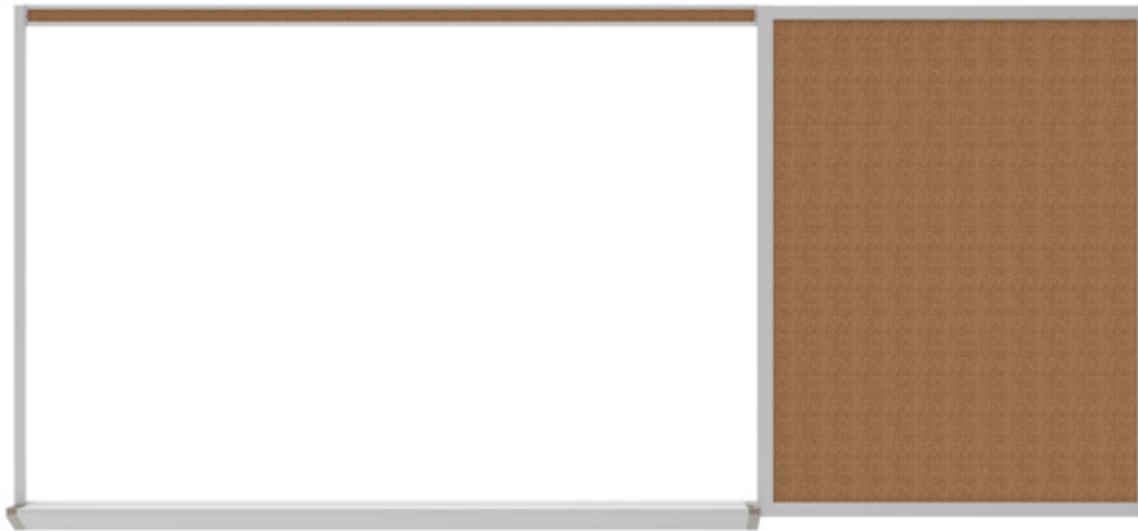


Map Hook



# COMBINATION BOARDS

▶ **AJW Combination Boards** are available in endless configurations, and they are available in your choice of trim style, board type, and board arrangement. Panels are available in sizes of up to 4' high x 16' wide and are joined with H-Bar assemblies. View the layouts below for typical markerboard / tackboard configurations, and contact your AJW Relationship Manager for assistance with designing your custom board.



## ▶ TYPICAL MARKERBOARD & TACKBOARD CONFIGURATIONS

More combinations available.



# DISPLAY CASES

▶ **AJW Display Cases** are fabricated to be durable and are designed as a streamlined unit, enabling you to showcase your team's accomplishments with confidence. Available in surface mounted or recessed, AJW display cases can be built with a number of different options.



## ▶ WOOD LAMINATE COLORS



Natural Maple  
(7001)



Amber Maple  
(7002)



Wild Cherry  
(7003)



Select Cherry  
(7004)



Mahogany  
(7005)

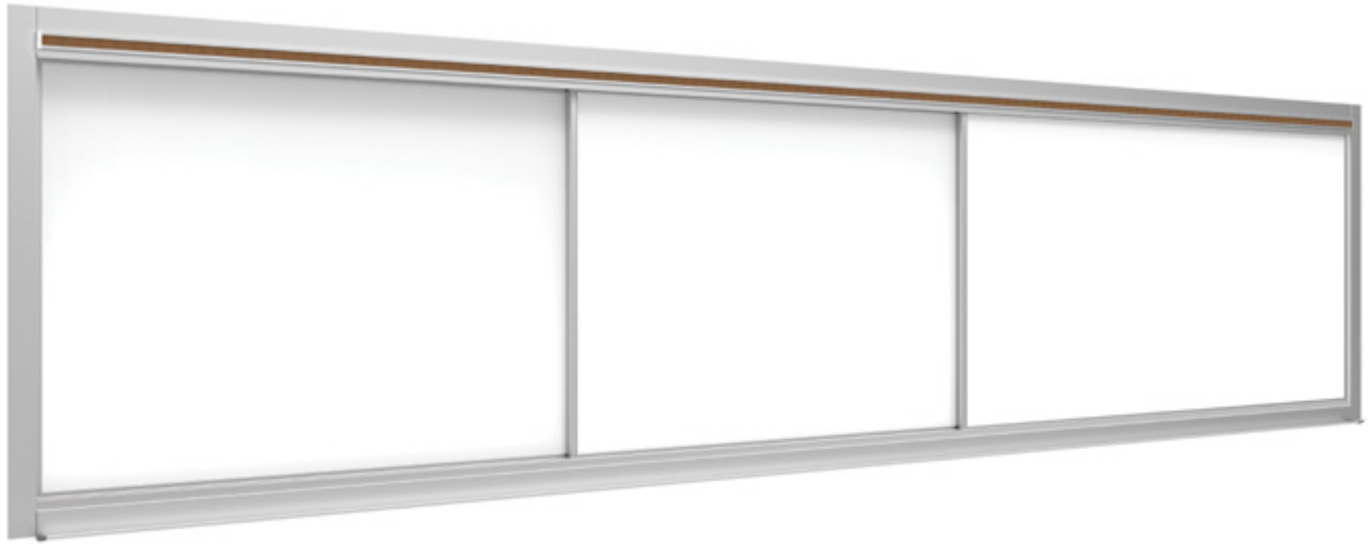


Walnut  
(7006)

## ▶ DISPLAY CASE SPECIFICATIONS

- Surface mounted and recessed options available.
- Heavy gauge extruded aluminum housing, with standard clear anodized finish.
- Powder coating options available (See color chart on page 5)
- Tackable back panel available in colored cork, vinyl faced, designer fabric, or natural cork.
- Optional wood side, top, and bottom panels with a depth of up to 24" available in AJW's standard laminate finishes, 16" depth standard.
- 1/4" thick tempered safety glass. Sliding and hinged type doors available.
- Hinged door display cases have continuous piano hinges and are equipped with keyed tumbler locks. Sliding door display cases are equipped with keyed sliding ratchet locks.
- 3 adjustable 1/4" tempered glass shelves with brackets for attachment to vertical standards.
- Optional top mounted fluorescent light.
- Sizes available in 4' and 6' height, up to 16' wide.

# HORIZONTAL SLIDING UNITS



**AJW Horizontal Sliders** can double or triple your workspace and are customizable to accommodate your specific project requirements. Available in surface mounted or recessed, AJW sliding units can be designed with a number of panel, trim, tray and display rail options.

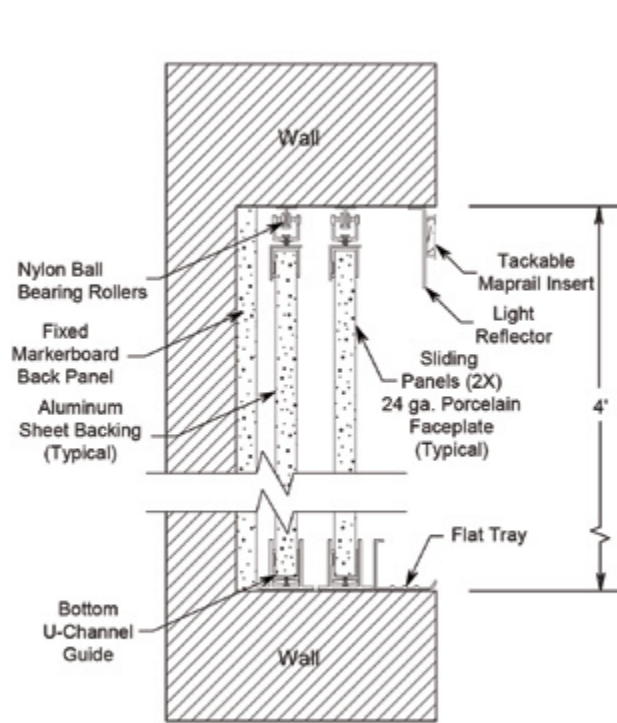
## ▸ SLIDING UNIT SPECIFICATIONS

- Sliding panels are manually operated and smoothly slide over aluminum top track on nylon ball bearing rollers.
- Trim and panel edging fabricated of heavy gauge extruded aluminum with satin anodized finish.
- Surface mounted or recessed mounting styles available.
- Optional back panel is available as a porcelain enamel markerboard or tackboard in natural cork, colored cork, designer fabric, Type I, or Type II vinyl. Having no fixed panel will allow access to cabinets, shelves, or other storage spaces.
- Choose from 2, 3, or 4 sliding panels on 2, 3, or 4 tracks.
- Sliding panels can be markerboards, tackboards, or a combination of both.
- Sizes available up to 4'H x 16'W.

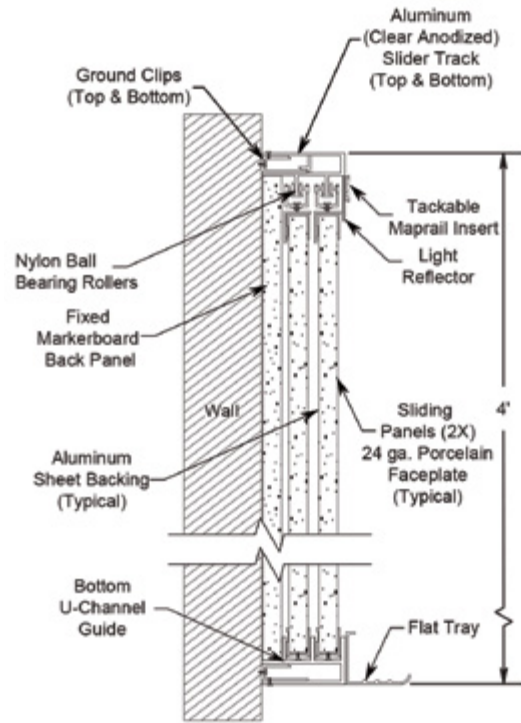
# HORIZONTAL SLIDING UNITS

## PRODUCT OPTIONS

### Recessed Slider



### Surface Mounted Slider





# BULLETIN BOARDS

▶ **AJW Bulletin Boards** are another communication tool that provide you with the opportunity to share your news in the boardroom, school hallway, or building reception area. Choose from one of our standard bulletin board cabinets or have us design a custom unit that conforms to your specific project's requirements.



## ▶ BULLETIN BOARD SPECIFICATIONS

- Surface mounted and recessed options available. Surface mounted units installed with Z-bar hangers.
- Heavy gauge extruded aluminum housing, with standard clear anodized finish.
- Powder coating options available. (See color chart on page 5)
- Tackable back panel available in natural cork, colored cork, designer fabric, Type I or Type II vinyl.
- 1/4" thick tempered safety glass. Sliding and hinged type doors available.
- Hinged door bulletin boards have continuous piano hinges and are equipped with keyed tumbler locks.
- Sliding door bulletin boards are equipped with keyed sliding ratchet locks.

## ▶ STANDARD SIZES

2'H x 3'W

2'H x 4'W

3'H x 3'W

3'H x 4'W

3'H x 5'W

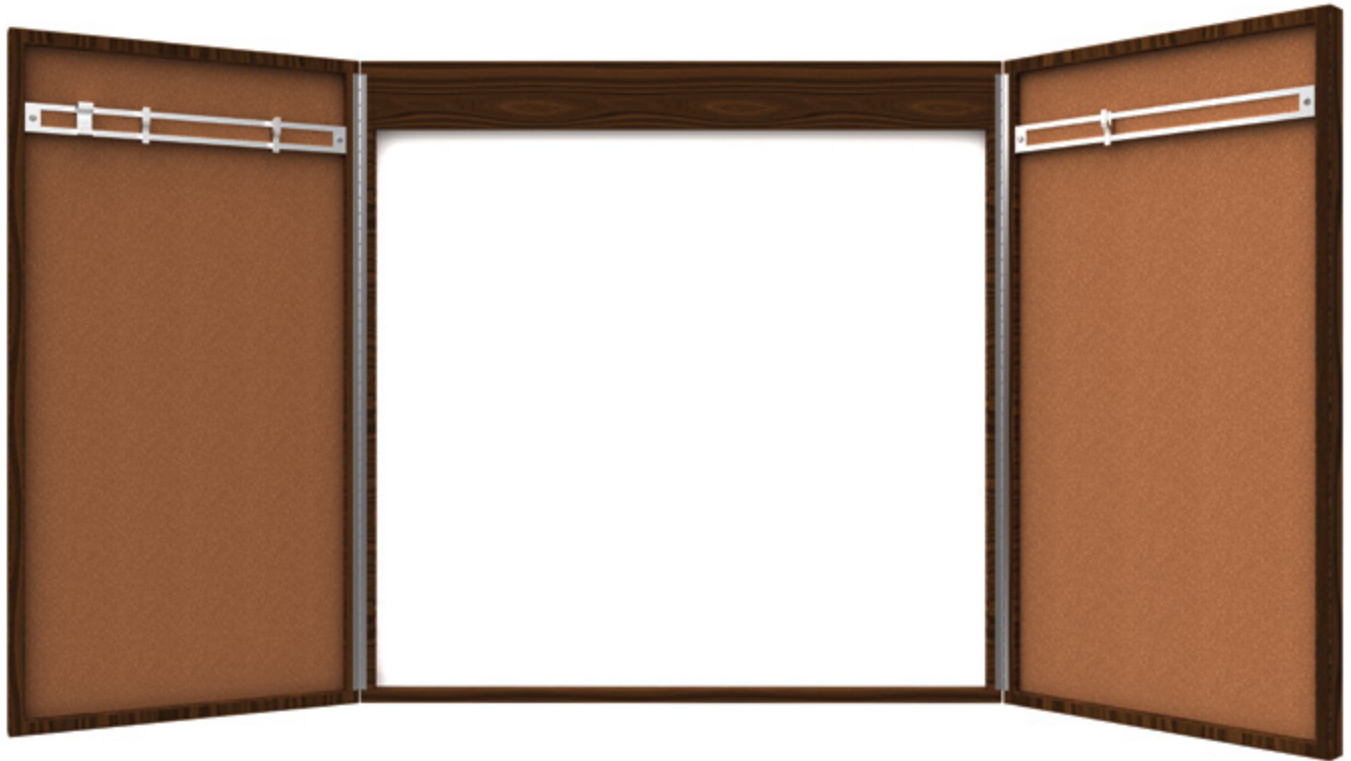
3'H x 6'W

4'H x 4'W

4'H x 5'W

4'H x 6'W

# CONFERENCE UNITS



- ▶ **AJW Conference Units** are practical and elegant. A classic wood finish will complement the decor of your boardroom, meeting room, or office. Our conference units feature a high quality porcelain on steel writing surface with tackable panels inside the doors.

## ▶ CONFERENCE UNIT SPECIFICATIONS

- Balanced, high pressure laminated, porcelain enamel markerboard of three-ply construction consisting of face sheet, core material, and backing.
- Choose from any one of AJW's tackable surfaces.  
(Natural Cork, Colored Cork, Vinyl Faced, Fabric Faced)
- Available in any of AJW's standard laminate colors.

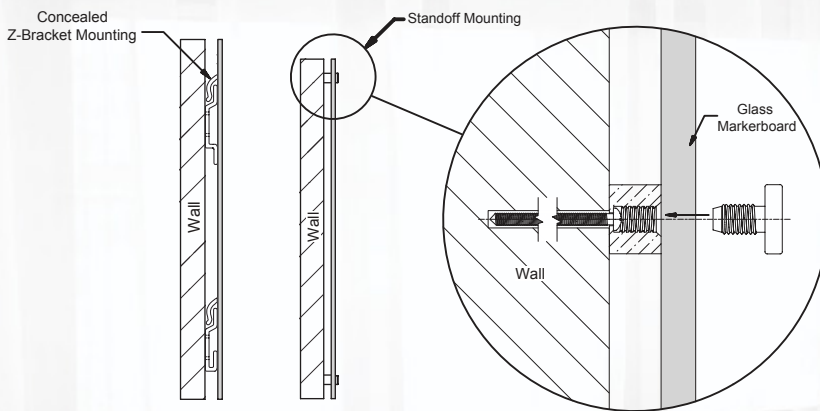
# GLASS MARKERBOARDS

## Mounting Options

Concealed Z-Bracket



Standoff Mounting



## Custom Color Options



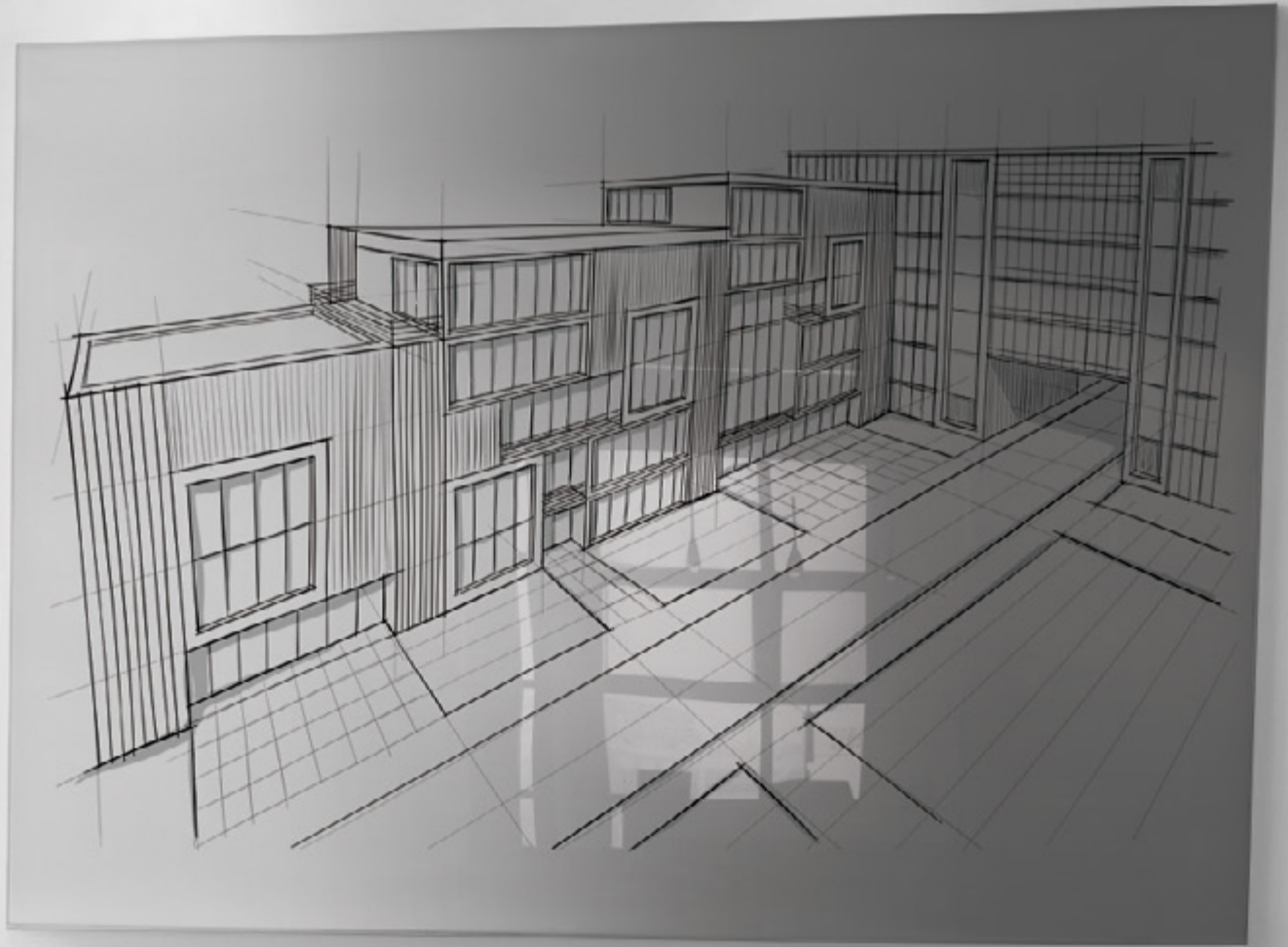
## AJW CUSTOM GLASSBOARDS

Looking to add a designer's edge to your classroom, boardroom, or your results driven environment? AJW Glass Markerboards have an attractive finish, and are available in endless color options. AJW will help you design your customized board to fit your application or choose from one of our standard installer-friendly mounting options.

- Available in two standard mounting styles (Standoff and Concealed Mounting).
- Custom Sizes Available: 4'H x 10'W maximum in one piece.
- Custom colors available.
- Customize your board with your company logo, school name, or your design of choice.

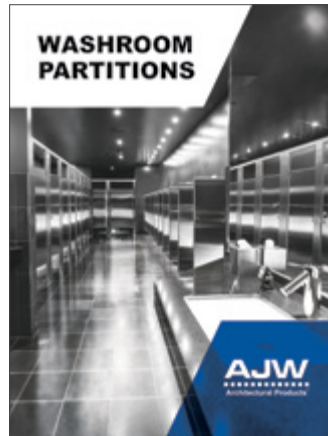


# GLASS MARKERBOARDS





- Mirrors & Shelves
- Grab Bars
- Hand Dryers
- Towel Dispensers
- Custom Accessories



- Solid Plastic Partitions
- Stainless Steel Partitions
- Baked Enamel Partitions
- Phenolic Black Core Partitions
- Plastic Laminate Partitions



- Standard Series Lockers
- Professional Series Lockers
- Athletic Series Lockers
- TA-50 Series Lockers
- Benches



Volume 1

509 Temple Hill Road  
New Windsor, NY 12553-5532

**Phone** (845) 562-3332

**Fax** (845) 562-3391

[www.ajw.com](http://www.ajw.com)





## Care, Cleaning, and Maintenance Instructions - Solid Plastic Partitions

Routine cleaning of dirt and grime should be performed with a soft wet cloth. Stubborn dirt and grease can be removed by using any non-abrasive household cleaning agent.

Graffiti can be removed by using an industrial graffiti remover. It is best to test a small subtle area before applying an industrial graffiti remover, as some cleaners can harm your plastic surface.

Mineral spirits or acetone may be used to remove any masking residue that may have adhered to the product after installation.

Do not use any form of abrasive cleaners or pads on your solid plastic toilet partitions. These products will leave scratch marks and will remove the sheen from the surface.

Regularly tighten any fasteners that may have become loose as a result of vibrations, vandalism, or misuse.

Most cuts and scratches can be repaired by burnishing the affected surface with a smooth round object, such as a spoon, or the rounded edges of a screwdriver handle. While utilizing the rounded edge of the tool, apply pressure to the cut or scratched surface to heal the plastic.

After cleaning, silicone can be applied to the plastic surface to brighten the finish.

## SECTION 10 5113

### METAL LOCKERS

This section includes editing notes to assist the user in editing the section to suit project requirements. These notes are included as hidden text, and can be revealed or hidden by one of the following methods:

Microsoft Word 2010: Display the FILE tab on the ribbon, click OPTIONS, then on left menu click on DISPLAY. Under ALWAYS SHOW THESE select or deselect HIDDEN TEXT.

Microsoft Word 2007: Click the OFFICE button, select WORD OPTIONS, select DISPLAY, then select or deselect the HIDDEN TEXT option.

Corel WordPerfect: From the pull-down menus select VIEW, then select or deselect the HIDDEN TEXT option.

This master specification section has been prepared by AJW Architectural Products for use in the preparation of a project specification section covering metal lockers and locker benches.

This specification is a part of the SpexPlus™ system, which comprises a full architectural master specification that can be used to specify all project requirements.

Other guide specifications are available from AJW covering the following products:

Section 10 1100 - Visual Display Units  
Section 10 2114 - Stainless Steel Toilet Compartments  
Section 10 2116 - Solid Plastic Toilet Compartments  
Section 10 2813 - Toilet Accessories

The following should be noted in using this specification:

Hypertext links to specific websites are included after manufacturer names and names of organizations whose standards are referenced within the text, to assist in product selection and further research. Hypertext links are contained in parenthesis and shown in blue, e.g.:

([www.spexplus.net](http://www.spexplus.net))

Optional text requiring a selection by the user is enclosed within brackets, e.g.: "Section [09 0000.] [\_\_\_\_.]"

Items requiring user input are enclosed within brackets, e.g.: "Section [\_\_\_\_ - \_\_\_\_]."

Optional paragraphs are separated by an "OR" statement, e.g.:

\*\*\*\* OR \*\*\*\*

Sustainable requirements are included for projects requiring LEED certification, and are included as green text. For additional information on LEED, visit the U.S. Green Building Council website at [www.usgbc.org](http://www.usgbc.org).

For assistance on the use of the products in this section, contact AJW Architectural Products by calling 845-562-3332, email at [specs@ajw.com](mailto:specs@ajw.com), or visit their website at [www.ajw.com](http://www.ajw.com).

For assistance with obtaining or using the SpexPlus™ Master Specification System contact SpexPlus by calling 1-888-877-SPEX (1-888-877-7739), by email at [chaney@spexplus.net](mailto:chaney@spexplus.net), or visit our website at [www.spexplus.net](http://www.spexplus.net).

#### PART 1 GENERAL

##### 1.1 SUMMARY

Edit the following paragraphs to include only those items specified in this section.

- A. Section Includes:
  - 1. Metal locker units with hinged doors.
  - 2. Metal [bases] [tops] [and] [filler panels].
  - 3. Locker benches.

Coordinate the following paragraphs with other sections in the project manual.

- B. Related Sections:
  - 1. Division 01: Administrative, procedural, and temporary work requirements.

## 1.2 SUBMITTALS

Limiting submittals to only those actually required helps to minimize liability arising from the review of submittals. Minimize submittals on smaller, less complex projects.

Include the following for submission of shop drawings, product data, and samples for the Architect's review.

- A. Submittals for Review:
  - 1. Shop Drawings: Include dimensioned layout, elevations, trim, closures, and accessories.
  - 2. Product Data: Manufacturer's descriptive data for each locker type.
  - 3. Samples: [Color chips showing full range of available colors.] [3 x 3] [\_\_ x \_\_] inch paint samples in specified colors.]

Include the following for submission of sustainable design submittals.

- B. Sustainable Design Submittals:
  - 1. Regional Materials: Certify distance between manufacturer and project and between manufacturer and extraction or harvest point in miles.

## 1.3 QUALITY ASSURANCE

The following paragraph specifies a minimum level of experience required of the parties performing the work of this section. Retain if required, and edit to suit project requirements.

- A. Installer Qualifications: Minimum [2] [\_\_] years [documented] experience in work of this Section.

Edit the following to suit project requirements.

- B. Accessibility: Conform to [applicable accessibility code.] [\_\_\_\_.]

## PART 2 PRODUCTS

### 2.1 MANUFACTURERS

- A. Contract Documents are based on products by AJW Architectural Products, 509 Temple Hill Road, New Windsor, NY 12553, 845-562-3332, [www.ajw.com](http://www.ajw.com), [specs@ajw.com](mailto:specs@ajw.com).

Edit the following to indicate whether or not substitutions will be permitted for the products in this section.

- B. Substitutions: [Under provisions of Division 01.] [Not permitted.]

### 2.2 MATERIALS

- A. Steel Sheet:
  - 1. Prime grade mild cold rolled, free from surface imperfections, capable of receiving powder coated finish.

### 2.3 COMPONENTS

Include the following for Standard Series lockers. Edit to suit project requirements.

- A. Lockers:
1. Model: Standard Series.
  2. Assembly: [Knocked down, field assembled with rivets.] [Welded into single unit and shipped pre-assembled.]
  3. Configuration: [Single tier.] [Double tier.] [Triple tier.] [Four tier.] [Five tier.] [Six tier.] [Two person.] [16 person.] [Wall mount.]
  4. Ventilation type: [Standard louver.] [Diamond Vent.] [Mini Louver.] [Square Vent.]
  5. Size: [ ] inches wide x [ ] inches deep x [ ] inches high.
  6. Mounting: [Recessed.] [Surface mounted.] [Free standing.]
  7. Construction:
    - a. Door frame:
      - 1) 16 gauge steel, channel shaped; vertical members provided with additional flange for continuous door strike.
      - 2) 16 gauge cross frame members, channel shaped, including intermediate cross frames on double and triple tier lockers.

Standard locker doors are 16 gauge but may be up to 14 gauge if required.

- b. Doors: [Knocked down; 16 gauge steel] [Welded; 14 gauge steel] with ventilation louvers, channel shaped on lock and hinge sides, with angle formations across top and bottom.

Standard locker bodies are 24 gauge but may be up to 16 gauge if required. Bottoms may be 14 gauge steel for knock-down lockers.

- c. Bottoms, tops, sides, backs, and shelves: [Knocked down; 24 gauge steel,] [Welded; locker back of 18 gauge steel, other parts of 16 gauge steel,] bolted at maximum 9 inches on center.
  8. Hinges: [2 inch high, five knuckle] [One piece, 16 gauge, full length continuous] type, riveted to door and frame.
  9. Handles: One piece, 20 gauge deep drawn stainless steel cup designed to accommodate locks.
  10. Latching device: Trigger lift type.
    - a. 14 gauge steel, attached to latching channel, with 9/32 inch hole for use with standard padlock, enclosed with molded thermal formed plastic cover.
    - b. Latch hooks engage frame at three points on doors over 42 inches high, and two points on doors under 42 inches high.
    - c. Rubber silencers secured in frame at each latch hook.
    - d. Positive automatic type; locker door may be locked when open, then closed without unlocking.

\*\*\*\* OR \*\*\*\*

11. Latching device: Single point type.
          - a. Frame hook of 11 gauge steel, welded to door frame, opposite of hinged side.
          - b. Padlock hasp protruding through stainless steel recessed handle.
    12. Interior equipment:
      - a. Shelves: Steel shelf on lockers over 48 inches high.
      - b. Hooks: Two single prong wall hooks and one double prong ceiling hook.

Lockers 18 inches in depth receive coat rod. Coat rods are optional on lockers less than 18 inches in depth.

- c. Coat rod: One per locker.
  13. Number plates: Polished aluminum with 1/2 inch high black numerals, riveted to door face.

\*\*\*\* OR \*\*\*\*

Include the following for Standard EX Collection lockers. Edit to suit project requirements.

B. Lockers:

1. Model: Standard EX Series.
2. Assembly: [Knocked down, field assembled with rivets.] [Welded into single unit and shipped pre-assembled.]
3. Configuration: [Single tier.] [Double tier.] [Triple tier.]
4. Size: [ ] inches wide x [ ] inches deep x [ ] inches high.
5. Mounting: [Recessed.] [Surface mounted.] [Free standing.]
6. Construction:
  - a. Door frame:
    - 1) 16 gauge steel, channel shaped; vertical members provided with additional flange for continuous door strike.
    - 2) 16 gauge cross frame members, channel shaped, channel shaped, including intermediate cross frames on double and triple tier lockers.

Standard locker doors are 16 gauge but may be up to 14 gauge if required.

b. Doors:

- 1) 14 gauge steel, non-ventilated, solid construction, channel shaped on both lock and hinge sides, with angle formations across top and bottom.
- 2) Full height 16 gauge reinforcement channel on single, double, and triple tier lockers:

Standard locker bodies are 24 gauge but may be up to 16 gauge if required. Bottoms may be 14 gauge steel for knock-down lockers.

c. Bottoms, tops, sides, backs, and shelves: [Knocked down; 24 gauge steel,] [Welded; locker back of 18 gauge steel, other parts of 16 gauge steel,] bolted at maximum 9 inches on center.

7. Hinges: [2 inch high, five knuckle] [One piece, 16 gauge, full length continuous] type, riveted to door and frame.
8. Handles: One piece, 20 gauge deep drawn stainless steel cup designed to accommodate locks.
9. Latching device: Single point type.
  - a. Frame hook of 11 gauge steel, welded to door frame, opposite of hinged side.
  - b. Padlock hasp protruding through stainless steel recessed handle.
10. Interior equipment:
  - a. Shelves: Steel shelf on lockers over 48 inches high.
  - b. Hooks: Two single prong wall hooks and one double prong ceiling hook.

Lockers 18 inches in depth receive coat rod. Coat rods are optional on lockers less than 18 inches in depth.

c. Coat rod: One per locker.

11. Number plate: Polished aluminum with 1/2 inch high black numerals, riveted to door face.

\*\*\*\* OR \*\*\*\*

Include the following for Athletic Collection lockers. Edit to suit project requirements.

C. Lockers:

1. Model: Athletic Series.
2. Assembly: [Knocked down, field assembled with rivets.] [Welded into single unit and shipped pre-assembled.]
3. Configuration: [Single tier.] [Double tier.] [Triple tier.] [Four tier.] [Five tier.] [Six tier.]
4. Ventilation type: Diamond shaped perforation, quantity and pattern to ensure maximum ventilation while maintaining structural integrity.
5. Size: [ ] inches wide x [ ] inches deep x [ ] inches high.
6. Mounting: [Recessed.] [Surface mounted.] [Free standing.]
7. Construction:
  - a. Door frame:
    - 1) 16 gauge steel, channel shaped; vertical members provided with additional flange



- for continuous door strike.
- 2) 16 gauge cross frame members, channel shaped, including intermediate cross frames on double and triple tier lockers.
- b. Doors: 14 gauge steel with diamond shaped perforation, channel shaped on lock and hinge sides, with angle formations across top and bottom.
- c. Bottoms, tops, sides, backs, and shelves: 18 gauge steel backs; other parts of 16 gauge steel, bolted at maximum 9 inches on center.
- 8. Hinges: [2 inch high, five knuckle] [One piece, 16 gauge, full length continuous] type, riveted to door and frame.
- 9. Handles: One piece, 20 gauge deep drawn stainless steel cup designed to accommodate locks.
- 10. Latching device: Trigger lift type.
  - a. 14 gauge steel, attached to latching channel, with 9/32 inch hole for use with standard padlock, enclosed with molded thermal formed plastic cover.
  - b. Latch hooks engage frame at three points on doors over 42 inches high, and two points on doors under 42 inches high.
  - c. Rubber silencers secured in frame at each latch hook.
  - d. Positive automatic type; locker door may be locked when open, then closed without unlocking.

\*\*\*\* OR \*\*\*\*

- 11. Latching device: Single point type.
  - a. Frame hook of 11 gauge steel, welded to door frame, opposite of hinged side.
  - b. Padlock hasp protruding through stainless steel recessed handle.
- 12. Interior equipment:

Lockers minimum 48 inches high have shelves.

- a. Shelves: 16 gauge steel shelf.
- b. Hooks: Three single prong wall hooks and one double prong ceiling hook.

Lockers 18 inches in depth receive coat rod. Coat rods are optional on lockers less than 18 inches in depth.

- c. Coat rod: One per locker.
- d. Number plate: Polished aluminum with 1/2 inch high black numerals, riveted to door face.

\*\*\*\* OR \*\*\*\*

Include the following for Professional Collection lockers. Edit to suit project requirements.

- D. Lockers:
  - 1. Model: Professional Series.
  - 2. Assembly: [Knocked down, field assembled with rivets.] [Welded into single unit and shipped pre-assembled.]
  - 3. Configuration: Single locker with open front.
  - 4. Ventilation type: Diamond perforated sides.
  - 5. Size: [ ] inches wide x [ ] inches deep x 72 inches high.
  - 6. Mounting: [Recessed.] [Surface mounted.] [Free standing.]
  - 7. Construction:
    - a. Locker frames: 16 gauge steel.
    - b. Backs: 18 gauge steel.
    - c. Bottoms, tops, sides, and shelves: 16 gauge steel, bolted at maximum 9 inches on center.

Include the following for an optional security box.

:

- 8. Security box:
  - a. 14 gauge lockable door with 16 gauge side panel.
  - b. Door attached to welded frame with 2 inch high, five knuckle hinge, secured with

- c. aluminum rivets.
- c. 16 gauge steel door frame formed to channel shape; vertical members provided with additional flange for continuous door strike.
- d. Recessed single point latch handle.

Include the following for an optional foot locker.

:

- 9. Foot locker:
    - a. Continuously hinged top with rubber bumpers at contact points.
    - b. Steel strengthened with two reinforcement channels welded to bottom of seat. Two side seat supports fastened to side panels and inserted in support tab on front locker panel.
    - c. Mini louvers.
    - d. Single point latch with padlock strike plate.
  - 10. Number plate: Polished aluminum with 1/2 inch high black numerals, riveted to door face.
- E. Accessories:
- 1. Locks: [Built-in combination locks.] [Combination pad locks.] [Built-in key locks; provide [two] [ ] keys per lock and [six] [ ] master keys.]

Include the following if filler panels required.

- 2. Filler panels: 20 gauge steel.

Include the following if perimeter trim is required.

- 3. Perimeter trim: 18 gauge steel, 3 inches wide, attached with concealed clips.

Include the following paragraph for metal bases.

- 4. Bases: 14 gauge steel, 4 inches high, Z-shaped, front [and end panels].

Include the following paragraph for sloped tops.

- 5. Sloped tops: 18 gauge steel, [continuous] type [with end closures].

Include the following for prefabricated locker benches.

- F. Locker Benches:
- 1. Size: 9-1/2 inches wide x [ ] feet long.
  - 2. Tops: [1-1/4 thick hardwood with rounded edges.] [1 inch thick plastic with 1/4 inch radius edges.]
  - 3. Supports: [Steel tubing with welded-on 10 gauge stainless steel top and bottom flanges, 16-1/4 inches high, finished to match lockers.] [2 inch width, 16 gauge brushed stainless steel, 16-1/4 inches high formed to trapezoidal shape, with four mounting holes in top for fastening to bench and four holes on bottom for fastening to floor.]

## 2.4 FINISHES

- A. Steel:
- 1. Power wash and phosphate treat.
  - 2. Apply hybrid epoxy/polyester powder coating, electrostatically applied and baked.
  - 3. Color: [ ] [To be selected from manufacturer's full color range].
- B. Wood: Two coats clear lacquer.

## PART 3 EXECUTION

### 3.1 INSTALLATION

- A. Install in accordance with manufacturer's instructions and approved Shop Drawings.

Include the following paragraph when lockers are set on a wood, concrete, or masonry base.

- B. Set on prepared locker base.
- C. Set plumb, level, and aligned.
- D. Attach lockers to supporting construction with anchors best suited to substrate conditions.
- E. Bolt adjacent locker units together to provide rigid installation.
- F. Install [filler panels] [sloped tops] [and] [bases].

### 3.2 ADJUSTING

- A. Adjust doors and latches to operate correctly.
- B. Touch up minor scratches and abrasions to match factory finish.

END OF SECTION